

## CERAMIC TRAP (2pin type)

### FEATURES:

- TWO-TERMINAL TYPE
- 3.58 / 4.43 / 4.5 / 5.5 / 5.74/ 6.0 / 6.5 MHz ARE AVAILABLE

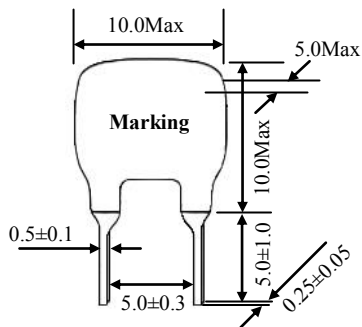


### ► MJ Series

PART NUMBER	NOMINAL CENTER FREQUENCY (fn)	TRAP ATTENUATION AT fn (dB) MIN.	30dB ATTENUATION BAND WIDTH (kHz) MIN.
XT 3.58 MJ	3.58 MHz	20	20
XT 4.43 MJ	4.43 MHz	20	40
XT 4.5 MJ	4.5 MHz	20	40
XT 5.5 MJ	5.5 MHz	20	40
XT 5.74 MJ	5.74 MHz	20	40
XT 6.0 MJ	6.0 MHz	20	40
XT 6.5 MJ	6.5 MHz	20	40

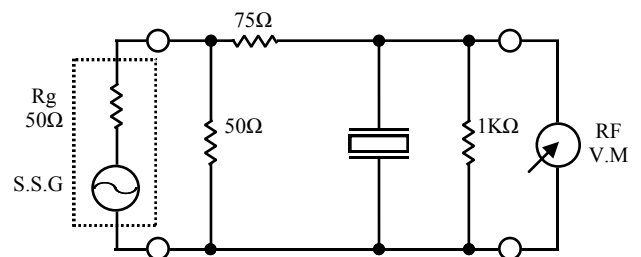
The level at 1MHz shall be made for a reference (0 dB)

### ■ PACKAGE DIMENSIONS



Unit:mm

### ■ TEST CIRCUIT



Transko Electronics, Inc reserves the right to make changes to the product (s), service (s), and specification (s) described herein without notice. See "Terms of Sale" for details on our website.